

Inner North Report 2021

Who We Are

A Community of Contrasts



About this report

From Richmond to Reservoir, from Fitzroy to Fawkner, from Cremorne to Coburg and covering the municipalities of Darebin, Moreland and Yarra is the **Inner North** and this is the place where we **live, work and play**.

It's our place and it's a place full of kids, dogs, music, good food and bluestone lanes. We know it well. Or do we? Have a look at the facts below. In any place as big as this, with almost 500,000 people, 179 languages and 106 religions it is bound to be more complex than that.

This report gives us a better understanding of the place where we live. It's a statistical report so it won't tell us why things are like they are, but it shines a light on some of the contrasts between the great things in the Inner North and the things we all see every day around us that we want to challenge for a better future.

The report was initiated by the Inner North Community Foundation, the Northern Funders Network and a group of dedicated people committed to the Inner North, and this is just the start. Of course, COVID 19 has created many short-term problems which must be solved. What we hope is that what we do now will also create a better community in the long term.

We can only do this if we set ourselves goals based on understanding the issues which affect our quality of life – which we need to keep and which to change. Then we can get together and organise how we get the priority changes started. We can do the short-term things knowing that they will build a better long-term future.

We know where we are starting, you can read about it here. But we need your help to move forward. Join us in this serious attempt to make a better Inner North for all of us. Find out more [HERE](#).

Now, enjoy exploring the place we call home.

Kevin Sharp, Project Guide

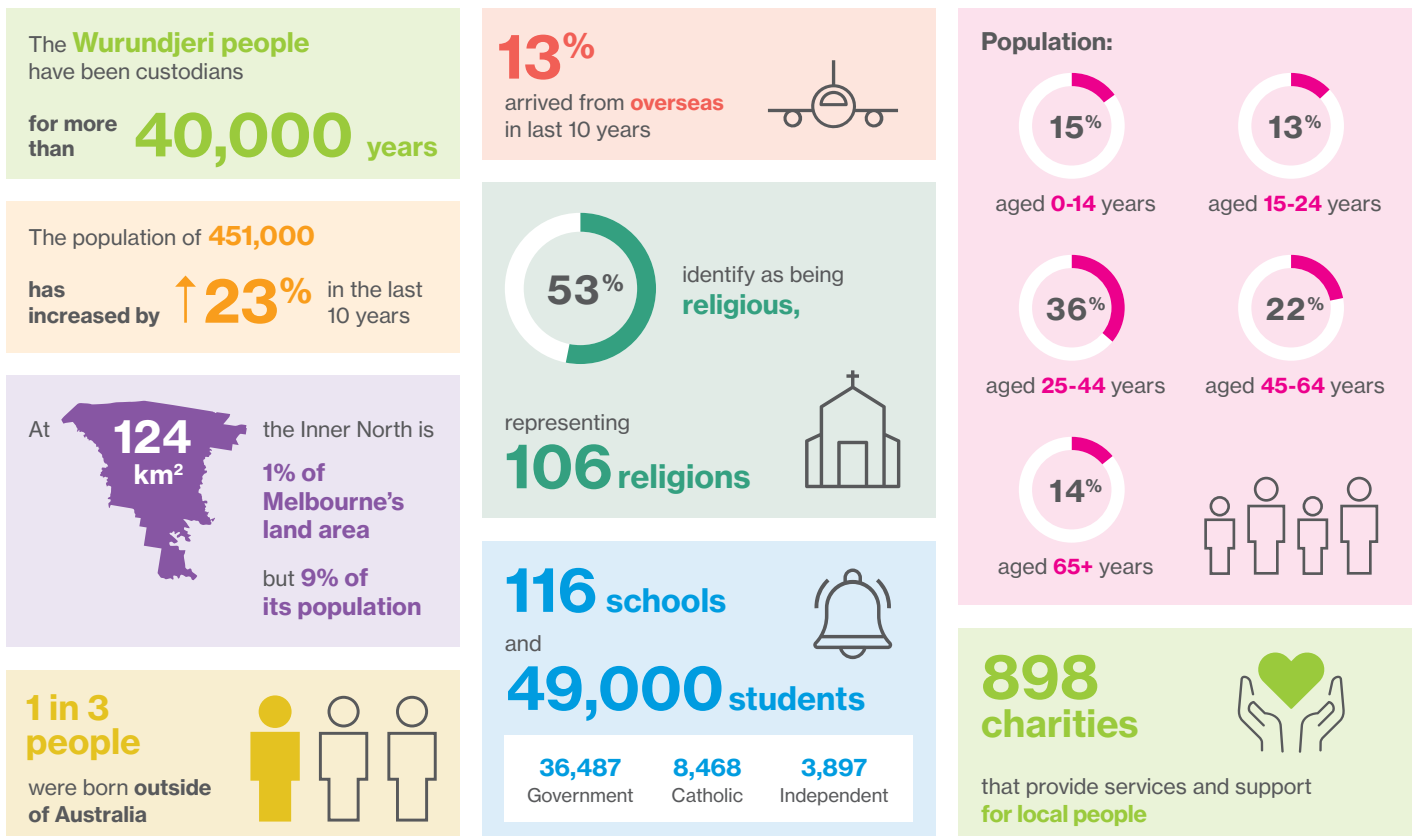
kevin@jump-start.com.au

Acknowledgement of Country

The producers of this report acknowledge the Wurundjeri Woi Wurrung People who are the Traditional Owners of the Land. We recognise their continuing connection to Land, Water and Culture. We pay our respects to Elders past, present and emerging.



About the Inner North





The Wealth Gap

DID YOU KNOW?

Australia's most generous postcode is 3068 Clifton Hill/North Fitzroy

INCOME INEQUALITY

Less than **\$40,000**

separates the average income of the

richest and poorest

suburbs in the Inner North

Compared to: **\$135,000**
Greater Melbourne

YET

The inequality in income between individuals is **similar to Greater Melbourne**



AVERAGE INCOME

Average income of earners is

\$1,262
per week



Compared to: **\$1,236** per week
Greater Melbourne

YET

More than **30,000**

people aged 15+

have no income



SOCIO-ECONOMIC RANKING



The Inner North enjoys a **high socio-economic ranking**

TOP 20% in Australia

YET



1 in 3 people are socio-economically **disadvantaged**



Housing

DID YOU KNOW?

Melbourne's first suburb was Fitzroy, 1839

HOMELESSNESS



61 people in every **10,000** are experiencing homelessness

That's... **2,581 people** experiencing homelessness

YET

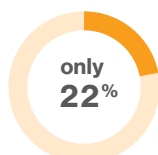
An estimated **9,985 homes** in the Inner North are vacant



The rate of **homelessness** in the Inner North

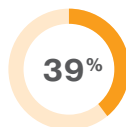
has **dropped 12%** in 5 years

YET



of people experiencing homelessness are in **supported accommodation**

RENTERS



of households are **renting**



Compared to:
39% Inner North **27%** Victoria **28%** Australia

AND

More than **1 in 3 renters**

are **lone person** or **lone parent** households

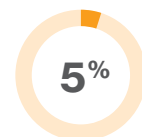


RENT ASSISTANCE

The median rent in **2 of every 5 suburbs** is **unaffordable** for most renters



YET



of people over 15 receive **rent assistance**

Compared to:
5% Inner North **6%** Victoria **6%** Australia

HOUSEHOLDS

45% of households

have moved at least once in the last 5 years



1 in 3

of these households **own their home**





Health and Wellness

❗ DID YOU KNOW?

Victoria's first Infant Welfare Centre was established in Richmond, 1917

ALCOHOL CONSUMPTION

13% of people in the Inner North drink **more than** the recommended two standard drinks per day

Compared to:

13% Inner North **14%** Victoria **16%** Australia

YET

20% of men drink harmful levels of alcohol

VACCINATIONS

The vaccination rate for 5-year old's is **95%**

YET

There are **350 admissions** to hospital per **100,000 people** for vaccine preventable conditions

Compared to:

322 admissions in Greater Melbourne **289 admissions** in Victoria
(per 100,000 people)

OBESITY

1 in 3 people in the Inner North are **obese**, similar to Victoria and Australia

AND

The rate of childhood obesity is **6.8%**

Compared to:

6.8% Inner North **8.0%** Victoria **8.2%** Australia

EXERCISE

2 out of 3 people exercise **less** than recommended

YET

11% use active transport to get to work
4% use active transport nationally

MENTAL HEALTH

Psychological distress:

12.6% of people in the Inner North live with **high psychological distress**

Compared to:

12.6% Inner North **13.3%** Victoria **12.9%** Australia

Mental health or behavioural issues:

21.5% of people in the Inner North have **mental health or behavioural issues**

Compared to:

21.5% Inner North **20.0%** Victoria **20.1%** Australia



Learning

❗ DID YOU KNOW?

You can study from preschool to PhD without changing postcodes in Bundoora

STARTING OUT

The Inner North is in the **top 13% nationally** for educational and occupational advantage

YET

1 in 5 children beginning school start with at least one **developmental vulnerability**

SECONDARY SCHOOL

66% of people over 15 have completed **Year 12 or equivalent**

Compared to:

66% Inner North **54%** Victoria **52%** Australia

YET

61% of the nearly **6,000 people** in the Inner North who never went to school **Women** make up

FURTHER EDUCATION

66% of people over 15 have a **post-secondary education**

Compared to:

66% Inner North **60%** Victoria **60%** Australia

YET

1 in 4 students are **not continuing** in further education or training after Year 12



Work

DID YOU KNOW?

Of the 47,605 people who work in the City of Darebin, 30.9% also live there

EMPLOYMENT SECTORS

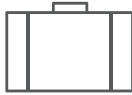
Largest employers are:

- Health Care
- Professional & Technical Services
- Education & Training
- Retail
- Accommodation & Food

Accounting for:

52%

of employment



Compared to:

45%
nationally

YET

The industries with the highest median income are:

- Mining
- Financial Services
- Utilities



UNEMPLOYMENT

Unemployment has been **steady for 12 months** at **5.4%** prior to COVID

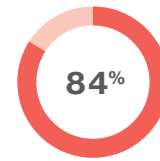
YET

The unemployment rate in the Inner North has **increased to 5.9%** since COVID restrictions were introduced

Compared to:

7.1%
Victoria

YOUNG PEOPLE



of people aged 15-19 years are **fully engaged** in work and/or education

YET

10% of all young people are **unemployed** and **looking for work**

WOMEN

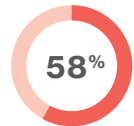
Women in the Inner North are

5x more likely than men

to contribute **over 30 hours** of unpaid domestic work



YET
Women account for



of people **not in the labour force** or otherwise away from work



Environment

DID YOU KNOW?

Platypus have returned to swim in the Merri Creek near Coburg

AIR QUALITY

Air quality in the Inner North is usually rated as

Good



Air quality categories:

- Good
- Moderate
- Poor
- Very Poor
- Hazardous

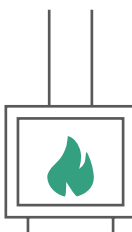


YET

The average amount of **fine particulate matter** in the air has **increased**

↑14% since 2015,

due to domestic wood heaters



RIVERS & CREEKS

The overall health of the **Yarra River catchment** has **improved** since 2000

YET

The water quality of **rivers and creeks** in the Inner North is **very poor**



CARS

1 in 7 households

do **not** have a car



AND

An additional **802 households**

are going without a car compared to 10 years ago

SOLAR



of dwellings have **solar systems** installed

Compared to:

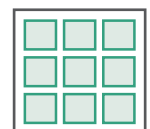
20%
nationally

YET

14,651

small scale solar panels

have been installed since 2001





Safety and Security

DID YOU KNOW?

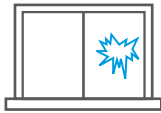
Australia's only community justice centre is in Collingwood

CRIME

The rate of **property damage incidents**

has dropped
↓ 25%

in the last 10 years



YET

The rate of **crimes of deception**

has nearly
doubled
in that time



FEELING SECURE

13% of all crimes are
against people

Compared to:

16%
state-wide

YET

54% of people in
the Inner North

feel safe walking
alone after dark



PERSONAL SAFETY

The on-person crime
rate is

**1 incident
per 100 people**

in the Inner North



YET

Family violence is

1 in 3 of these
on-person crimes

Compared to:

1 in 5
10 years ago



Culture and Community

DID YOU KNOW?

The greatest number of songwriters in Australia across all genres can be found in Brunswick

RECREATION

1 in 3 people
in the Inner North
engage in
creative activities

YET

Less than **↓ 10%** of
people

participate in sport,
amongst the lowest in Victoria



Compared to:

10% Inner North
12% Greater Melb
13% Victoria

INDIGENOUS LANGUAGE

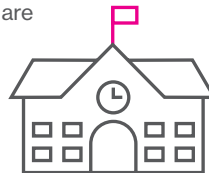
49 people
speak an
indigenous language
at home

YET

371 children

in the Inner North are

learning
**Aboriginal
languages
in school**



DISCRIMINATION

2.6% of people in
the Inner North
**aren't accepting
of other cultures**

Compared to:

2.6% Inner North
3.7% Victoria
4.5% Australia

YET

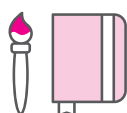
17.6% of people
**experience
discrimination**

ARTS & RECREATION

There are

1,165
arts & recreation

businesses
in the Inner
North



The industry provides

8,615
jobs

to residents



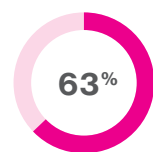
PARTICIPATION

18% of residents in
the Inner North

contribute to the
community by
volunteering



YET



of people **voted** in the
2016 local election –
one of the lowest rates
in the State

SOURCES:

For an online copy of this report click [HERE](#)

For a detailed list of references used in this report click [HERE](#)

THANKS TO:



The Project Guides

Kevin, Ben, Carolyn,
Craig, Lee, Kerry,
Michael and Nina



Data Wrangler

Kelly
(*Third Measure*)



Picture Magic

Annie
(*Annieworks*)



Additional Pics

Barney
(*Seeing Things*)

IF YOU HAVE QUESTIONS:



Ben

Email: BRodgers@innernorthfoundation.org.au
Phone: (03) 8689 1967

This is who we are – now join us to make us who we want to be.

We are supporting a Community Action Panel to identify how to do what's needed, and we are looking for eyes and ears on the ground.

If you are active in the Inner North or work here and talk to people who live here, we need about 3-4 hours of your time over the next 3 months. Together we can make a difference.

Find out more [HERE](#)

Together, we can make this an **even better place to be.**

Thanks to our sponsors:

